

www.prosense.com.tr



COMPANY INC.

Prosense Gas Detection Systems

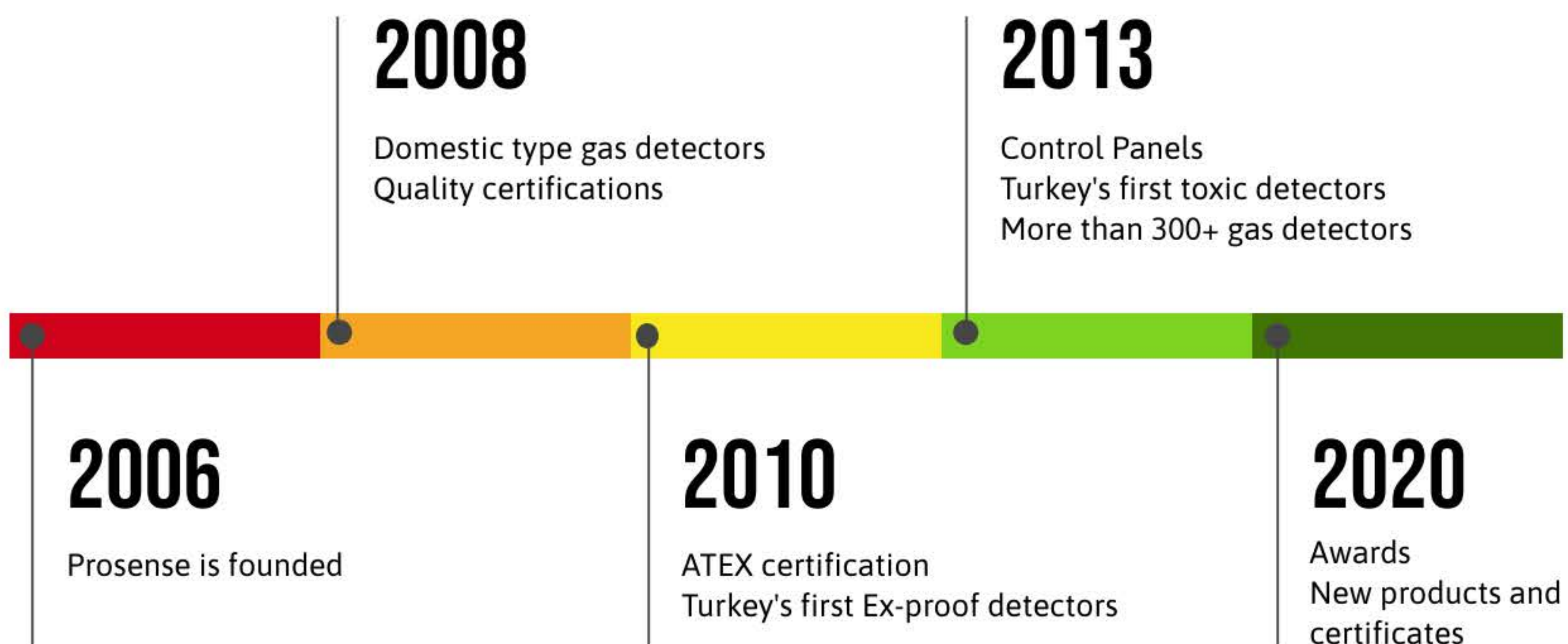
# Makes Life Safer

CONTACT:

Cumhuriyet Mah.Mermer Sok.No:16 Istanbul - Turkey  
info@prosense.com.tr | +90 216 306 77 88

01 | 06 | 2020





Prosense is founded in 2006 and specialized in gas detection. Prosense manufactures ATEX/IECEX certified gas detection systems in Istanbul - Turkey.

Prosense has a complete range of high-performance gas detectors and gas control panels primarily designed for protection against toxic, flammable and asphyxiates gases. Currently, Prosense provides its solution to more than 30+ countries worldwide.

Prosense has been awarded two times as a fast-growing company in Turkey (2016, rank #31/2018, rank 61). Moreover, Prosense has been awarded by Deloitte as one of the Technology Fast 50 Turkey, 2019. The company, growing rapidly, has 30 employees.



## Our Mission

Prosense produces necessary gas detectors and control equipments to provide people and communities' in a healthy and safe conditions. It aims to protect the safety of industrial plants, lives and health of people from dangerous gases by ensuring the use of these equipments correctly. Prosense works with its customers so that it can ensure customers' satisfaction by applying suitable solutions to customers' needs as well as reducing hazards.

## Our Vision

Prosense wants to be known as a reliable business partner which produces high quality creative solutions for preventing hazards from gas leaks. It always aims to ensure the safety of people and environment by using new technology and methods and by producing the best solutions.

Prosense Teknoloji has an aim of growing in Turkey's local market by producing gas detectors and control panels which ensure the safety of dangerous places, and also it aims to take a place in the World market with its products conforming industrial standards.





Prosense Teknoloji has been focused on qualified, technological, and creative products by understanding the current and future market requirements since its establishment. In this regard, Prosense has **ISO-9001** Quality certification since 2008 and also **QAN/QAR** certifications for all manufacturing activities.

Prosense Teknoloji's quality policy:

- Being a reliable company to meet the needs and expectations of our customers.
- Reducing the costs by following technological developments closely and increasing the profitability of the company, our partners and our customers.
- Increasing quality awareness of the employees in the company by continuously improving quality norms.
- Working with customers and suppliers in cooperation based on trust and mutual respect.
- Completing every initiated project on time by following and using the latest techniques within the desired qualities and budget limits.
- Serving with the quality management system which meets the requirements of TS EN ISO 9001:2015, TS EN ISO/IEC 80079-34 and TS EN ISO/IEC 17025 standards.
- Continuous improvement of the Quality Management System



# MANUFACTURING

The establishment of Prosense is based in Istanbul, Turkey.

Gas detectors, control panels and other relevant equipment are produced in this plant and distributed to other countries.

The plant was designed to produce numerous type of gas detectors, gas controls panels and other relevant equipment in the modular production line considering **5S** strategy for high efficiency.

Thus, Prosense has high manufacturing capacity and it is able to offer quick lead times.

Prosense works based on just in time production principles in order to provide full life-time which is mandatory for gas detectors. Additionally, Prosense follows additional steps to ensure product quality in the manufacturing process:

- ✓ During the manufacturing and test process, a specific software designed by Prosense's R&D department is used to control devices.
- ✓ Equipment and tools used in the manufacturing process are controlled, tested and certified regularly by the authorized institutions.
- ✓ Calibration gases are used in the manufacturing process is NIST traceable and certified by international institutions.
- ✓ Apart from internal audit, Prosense's manufacturing plant is audited regularly by the third part institutions.
- ✓ Equipment and components manufactured are traceable in all production steps to prevent employees' errors in the process.



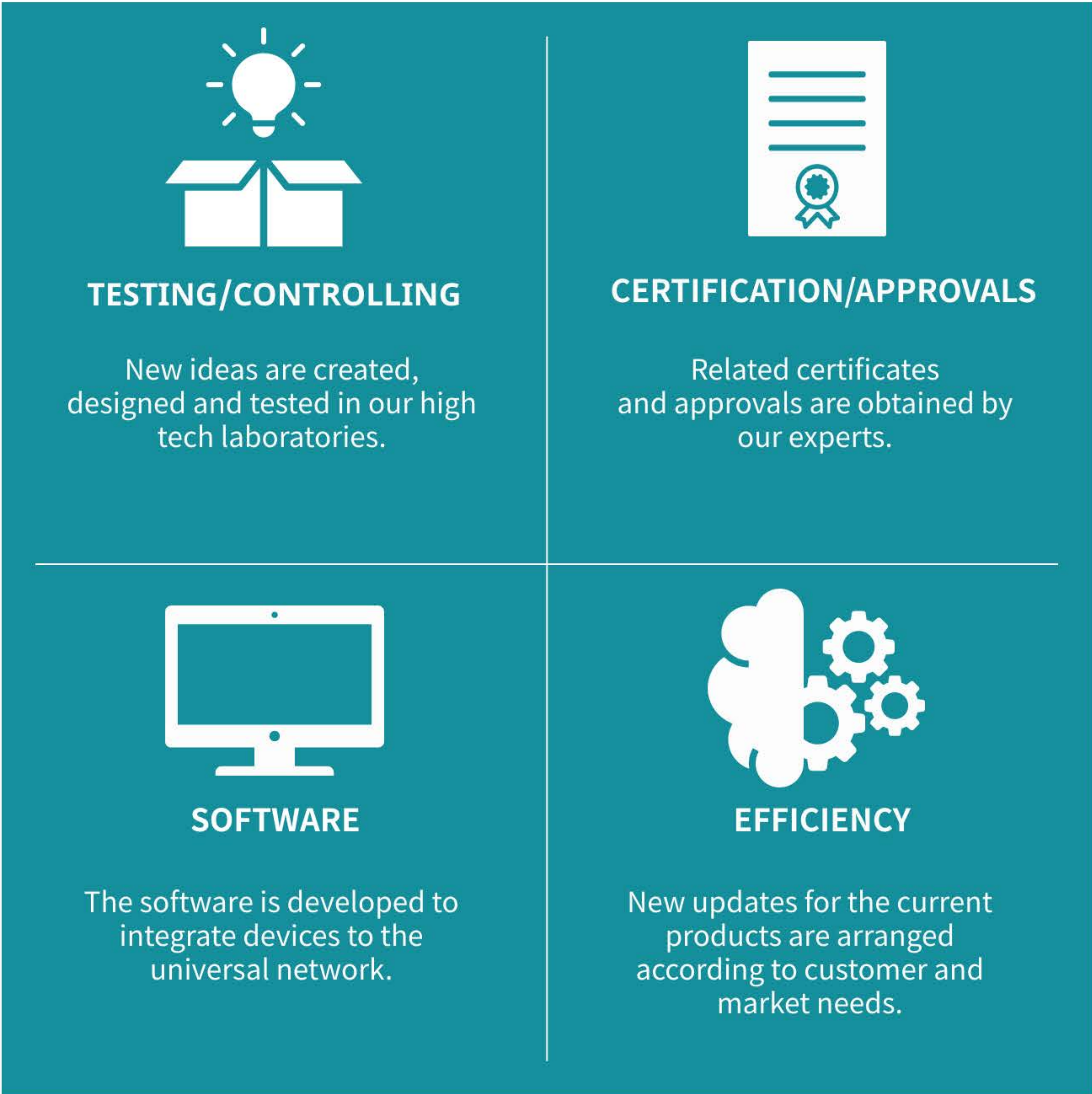


# RESEARCH&DEVELOPMENT

Prosense targets new ideas and supports them with high-tech equipment and software in order to develop new solutions. In this regard, Prosense's R&D department is always active and creates new solutions for the market.

All Prosense's products are designed, developed and tested in Prosense laboratories. The laboratories are equipped with the professional instruments, tools and devices in order to simulate the toughest environmental conditions and applications.

Prosense's R&D department has been separated into four sections as follows,





# PRODUCTS

As Turkey's largest manufacturer, Prosense product range includes gas detectors, gas control panels and other relevant units. Currently, Prosense has over thousands of detectors for detecting toxic, combustible and asphyxiate gases.



## Toxic & Flammable Gas Detectors for heavy industry, onshore/offshore applications

Prosense produces **PQD** and **PQN** Series, top-class gas detectors, for the toughest applications. In these series, Prosense offers a user-friendly interface, a wide range of sensors and communication options with SIL2, ATEX/IECEX certificates and EN 60079-29 performance approval. Moreover, the detectors are designed to operate in harsh environmental conditions.



## Toxic & Flammable Gas Detectors for industrial plants

Prosense is designed **P** Series detectors for industrial plants. In the P Series, Pellistor, Infrared, Electrochemical sensors can detect the target gas reliably in the explosive atmosphere with ex-proof housing. ATEX/IECEX certified P Series detectors can be integrated into the systems via 4-20mA, Modbus and relay contacts.



## Specially designed combustible gas detectors for Oil&Gas stations

**PE** and **PE-Kayo** series are designed to detect combustible gases as a cost-effective solution in the explosive atmosphere. They offer reliable detection with ATEX/IECEX certificates. 4-20mA, Modbus, relay contacts in the detectors are simple to operate. The motion sensor in PE-Kayo can also measure the impact and generate an alarm in oil&gas stations.





makes life safer



## Toxic & Flammable Gas Detectors for safe area applications

**PC3** and **BTN** Series is simple to operate in the non-ex atmosphere to detect combustible and toxic gases. 4-20mA, Modbus and relay contacts in the detectors are easy to connect into the other systems.



## Toxic & Flammable Gas Detectors for closed area car parks/tunnels

Prosense developed **PPS** and **PPS+** car parking systems to detect LPG, NO2 and CO gases in closed car parks and tunnels. PPS and PPS+ Series, using Modbus RS485, can be managed up to 128 detectors with a single controller up to 4 zones. PPS+ is certified with EN 50545-1.



## Digital and Analog Gas Control Panels for monitoring

Prosense offers gas detection systems as a complete solution. It also produces **S-DP4**, **S-DP8** and **S-DP32** controllers to manage gas detectors and relevant equipment. Analog and Digital panels also offer relay outputs to manage other devices.







## 1 Commissioning

Prosense can commission the gas detection systems on demand of the customers.



## 2 Maintenance

Prosense technical team ensure you for receiving excellent maintenance service of every gas detection systems.



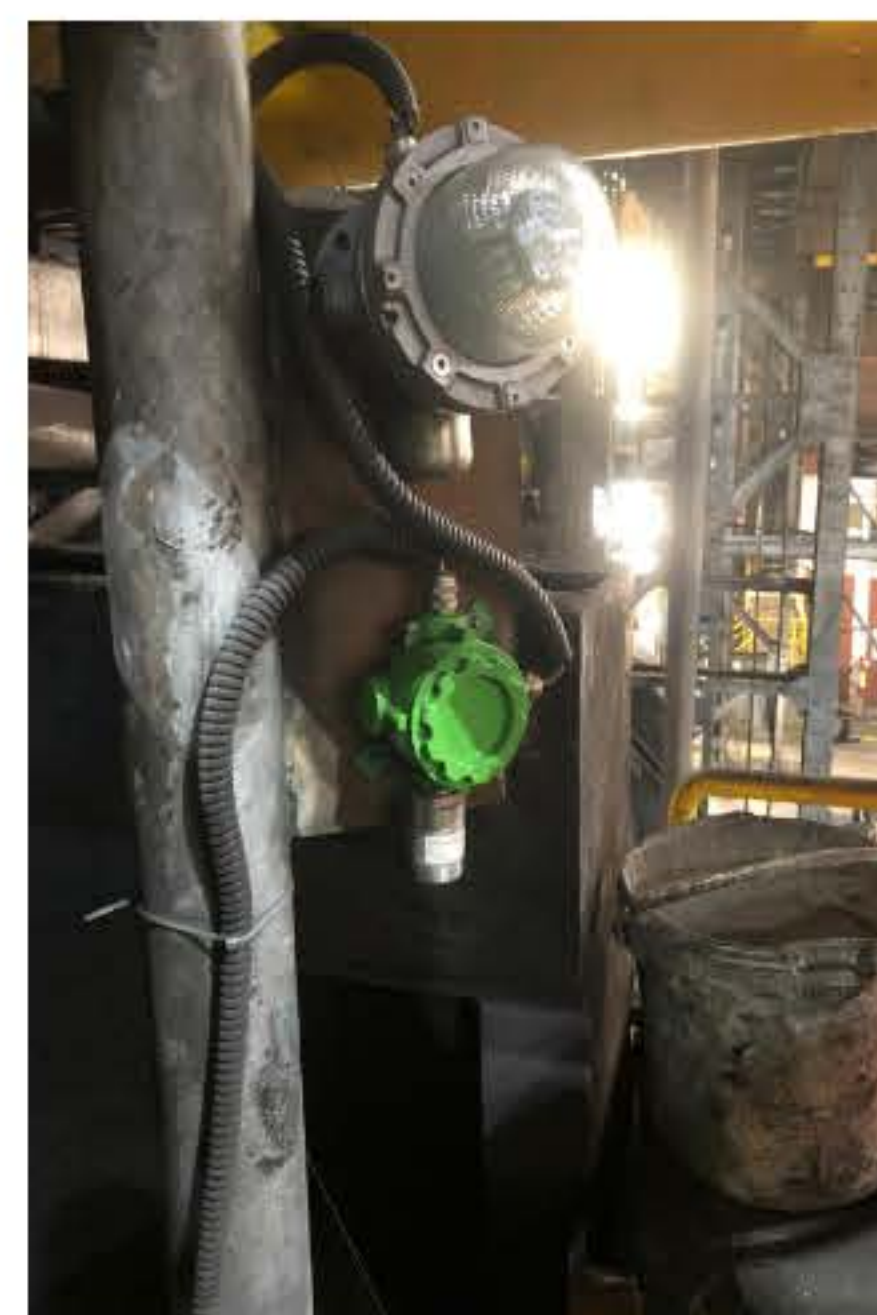
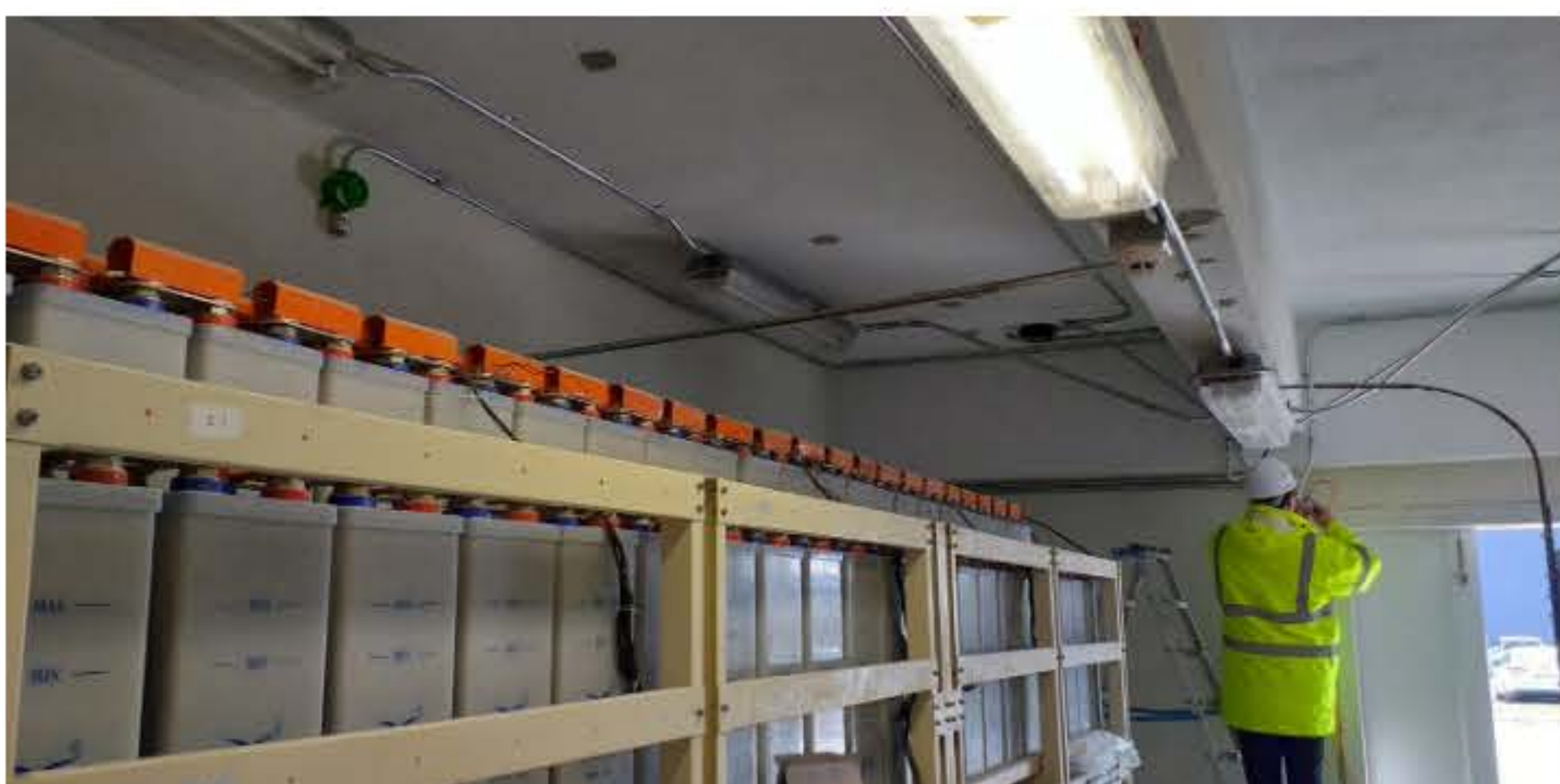
## 3 Calibration

Prosense provides calibration services according to customer requirements in all world.

Prosense technical service has been trained and certified in accordance with TS EN 60079-10-1:2015, TS EN 60079-10-2:2015 Gas detectors - Selection, installation, use and maintenance of detectors for flammable gases and oxygen.



# APPLICATIONS



- Oil&Gas
- Marine
- Energy
- Metal-Steel Industries
- Automotive Industry
- Food Industry
- Pharmacy-Medical

- LPG-LNG
- Petrochemical
- Onshore-Offshore
- Mining and Tunnels
- Water Treatment
- Car Park
- HVAC

- Battery Charging Areas
- Industrial Kitchens
- Chicken Farms
- Fertilizer Production
- Alcohol-Breweries
- University-Laboratory



## REFERENCES



Prosense has been involved in worldwide projects. Prosense is a global supplier of Siemens and provides equipment in 72 countries. Prosense also is a partner of Honeywell and works together for the projects in Turkey.

Our partners in Europe, Africa, the Middle East and Asia also provide Prosense's solutions to the local and international markets.

### Oil&Gas

- Shell
- Lukoil
- Total
- Gazprom
- Socar
- Bonatti
- BP Petrolleri A.Ş
- Botaş

### Food - Beverage

- Unilever
- Coca Cola
- Pepsi
- Ülker
- Eti
- Şenpiliç

### Energy

- Exergy
- Enerjisa
- Maren JES(Geothermal)
- Ken Kipaş JES(Geothermal)
- 3S Kale JES(Geothermal)
- MIS3 JES(Geothermal)

### Water Treatment

- Kayseri Atik Su Aritma
- Konya Atik Su Aritma
- Aktem Su Aritma
- İzsu

### Chemical/Medical

- Akzo Nobel
- Ak-Kim
- CST Kimya
- Eczacibasi Holding
- Berko İlaç
- Nobel İlaç

### Automotive Industry

- MAN
- ISUZU
- MERCEDES
- Renault
- Toyota
- Honda





# Prosense

makes life safer

## CONTACT

Prosense Teknoloji San. Ltd. Şti

Adress: Cumhuriyet Mah.Mermer Sok.No:16, Kartal, Istanbul - Turkey

E-mail: [info@prosense.com.tr](mailto:info@prosense.com.tr)

Tel: +90 216 306 77 88

Fax: +90 216 473 81 29