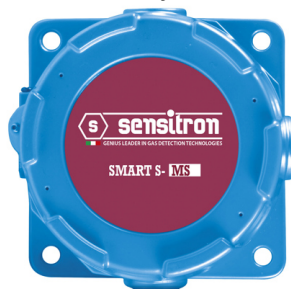


SMART S-MS TX SINGLE SENSOR HEAD & SINGLE OUTPUT (MARINE APPROVED)



Designed to meet with the toughest industrial requirements, **SMART S-MS** line allows monitoring flammable, toxic and refrigerant gases in harsh environments. The detector can be housed in alloy or stainless steel housing. These detectors have been certified to SIL 2 Hardware SIL 3 Software capability and are ATEX certified for zone 1 as II2G Ex db IIC T5 Gb

SMART S-MS line is also marine Lloyd's certified.



S-MS 4A (copper free Al enclosure)



S-MS 2S (SS enclosure)

Sensor heads to be selected among S4, S6, S8

4A Transmitter Exd Aluminum enclosure, copper free, electronics and features

CODE	DESCRIPTION		
SMS4A 11	Electronic with1 output RS485+4-20mA		
SMS4A 13	Electronic with1 output RS485+4-20mA, relay card		
SMS4A 17	Electronic with1 output RS485+4-20mA, relay card, Modem Hart		

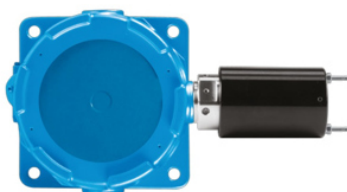
2S Transmitter Exd Stainless steel enclosure, electronics and features

CODE	DESCRIPTION		
SMS2S 11	Electronic with1 output RS485+4-20mA		
SMS2S 13	Electronic with1 output RS485+4-20mA, relay card		
SMS2S 17	Electronic with1 output RS485+4-20mA, relay card, Modem Hart		

Examples of possible solution:



SMS4A11-S8003ME



SMS4A11-S6002ME



SMS2S11-S4003ME